



Mk32

Advanced Single Phase
Prepayment Meter



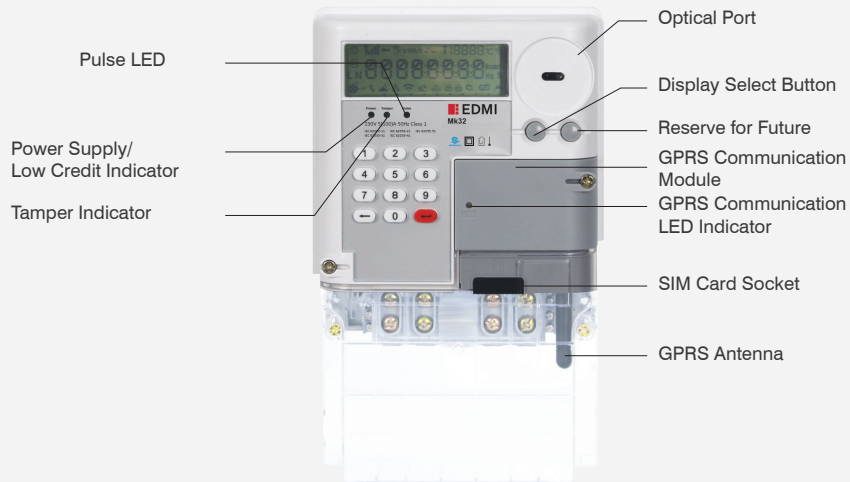
 **EDMI**

Mk32



Abacus Series - Class 1 and Class 2

Meter Details

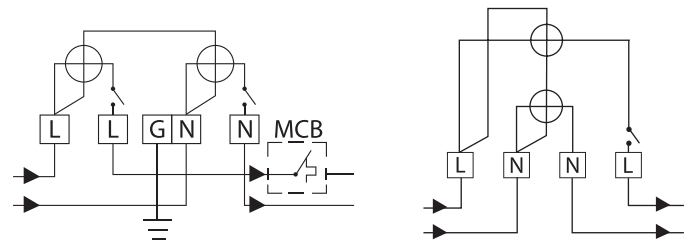


Dimensions

Option of:
Short terminal cover
196mm (L)
Long terminal cover
218mm (L)



Terminal Configuration



MCB Miniature Circuit Breaker G Ground
L Line N Neutral

LCD Display



- | | |
|--|---|
| 1 Relay Close | 16 Low Battery Indicator |
| 2 Relay Open | 17 Diagnostic Icon |
| 3 Load Usage Level/Communication Signal* | 18 Magnetic Tamper |
| 4 Reverse Power | 19 Lid Cover Tamper |
| 5 Tamper Indicator | 20 Terminal Cover Tamper |
| 6 Relay Status (unused) | 21 Overload |
| 7 k Multiplier with Display of Units | 22 Unbalanced Load |
| 8 Max Demand Indicator | 23 GPRS Communication |
| 9 Screen Index | 24 RF Communication |
| 10 Internal Temperature Unit* | 25 Local Communication |
| 11 Currency* | 26 8 Character of Eight-Segment Display |
| 12 Frequency Unit | 27 Quadrant Indicator |
| 13 Reverse for Future | 28 LCD Display Set |
| 14 Enunciators* | 29 Measurement Element |
| 15 RTC Failure | |

*For Future

Standards and Compliance

IEC 62052-11

Electricity metering equipment (AC) - General requirements, tests and test conditions - Part 11: Metering equipment

IEC 62053-21

Electricity metering equipment (AC) - Particular requirements - Part 21 Static meters for active energy (classes 1 and 2)

IEC 62053-23

Electricity metering equipment (AC) - Particular requirements - Part 23 Static meters for reactive energy (classes 2 and 3)

IEC 62055-41

Payment systems - Standard Transfer Specification - Application layer protocol for one-way token carrier system

IEC 62055-51

Payment systems - Standard Transfer Specification - Physical Layer Protocol for one-way numeric and magnetic card token carrier

SPLN D3.009:2010

Single-Phase Prepaid Active Energy Static Meter by System of Standard Transfer

| | |
|-------------------------------------|---|
| Measurement | 1 phase 2 wire (optional neutral current measurement) 1 phase 3 wire* |
| Voltage | Nominal voltage (Un): 220V to 240V Operating range: 0.5Un to 1.2Un Withstand range: 0V to 456V Impulse voltage: 4kV |
| Current | WC range: 5/60A, 10/60A, 5/100A, 10/100A WC limit: 30 times I _{max} for 0.5 cycles Phase current measurement sensor: Shunt Neutral current measurement sensor: CT |
| Terminal | Terminal cross-section: 58.24mm ² |
| Power Consumption | Voltage circuit: <10VA/phase, 2W @ V _n Current circuit: <2.5VA/phase @ I _n |
| Frequency | 50Hz/60Hz |
| Inputs/Outputs Configuration | 3 x LED indicators 1 x energy pulse output |
| Relay | Two internal disconnect relays (80A or 120A) |
| Battery | Internal lithium battery (3.6V) Internal super capacitor Backup time of 5 years without power (lithium battery) Backup time of 48 hours without power (super capacitor) |
| Data Memory | 2MB of non-volatile memory |
| LCD Display | 8 Character of eight-segment display (9mm x 4.96mm) Display available without mains power Option for backlight |
| Real-time Clock | Precision clock accuracy: <5ppm (15 seconds per month) at 23°C |
| Keypad | Option of silica gel keypad or capacitive touch keypad |

| | |
|------------------------|--|
| Measured Values | 1 element 4 quadrant Import/Export/Absolute Wh, varh and VAh Per quadrant Wh, varh and VAh Power: W, var, VA, Vrms, Irms Power factor, frequency |
|------------------------|--|

| | |
|------------------------------------|--|
| Load Profile | Up to 8 channels and 2 independent surveys Intervals programmable from 1 to 60 minutes Energy, instantaneous readings pulsing inputs as channel sources Ability to store average/minimum/maximum values for interval duration |
| Time of Use | Up to 8 rates plus unified rate Up to 8 separate import and export registers Daily, weekly, monthly, yearly and special days Up to 48 previous periods plus period totals Block or rolling maximum demand Time of maximum demand |
| Calendar | Supports Daylight Saving time |
| Tamper Detection and Alarms | Provision for sealing with conventional wire or plastic seals Reverse current detection Line and neutral current unbalance detection Meter cover and terminal cover detection Faulty load relay detection Overload detection Magnetic tamper detection (option) Alarms are stored in event logs |
| Security | Multi-level security (username and password including encrypted log-in) Up to 10 independent security levels Up to 8 individual users |
| Operating Mode | Credit or debit operation |
| Communications | 3 Independent communication ports: Optical port: FLAG (IEC 62056-21) Built-in communication -RF: 300MHz to 950MHz (configurable) -DBPSK PLC Module: 187.5kHz Pluggable communication module -GPRS/GSM (850/900/1800/1900 MHz) |
| Protocol | EDMI command line |

| | |
|----------------------|--|
| Environmental | Specified operating range: -25°C to +55°C Operating range limit: -40°C to +70°C Storage range limit: -40°C to +85°C Relative humidity: Up to 75% mean, 95% non-condensing for 30 days Ingress protection: IP54 (without suction) |
|----------------------|--|



HEADQUARTERS (SINGAPORE)

EDMI LIMITED

47 Yishun Industrial Park A, Singapore 768724

☎ (65) 6756 2938

✉ sales-singapore@edmi-meters.com

INDONESIA (JAKARTA)

PT EDM I INDONESIA

Rukan Tendean Square No. 8
Jl. Wolter Monginsidi 122-124
Jakarta 12170, Indonesia

☎ (62) 21 7278 0868

✉ sales-indonesia@edmi-meters.com

MALAYSIA (KUALA LUMPUR)

EDMI METERS SDN BHD

Suite G-1A, Ground Floor, N-Tatt Building
No. 2 Jln TP 5, Taman Perindustrian UEP
47600 Subang Jaya, Selangor, Malaysia

☎ (60) 3 8023 6317

✉ sales-malaysia@edmi-meters.com

PHILIPPINES (MANILA)

EDMI PHILIPPINES INC

2/F Mirax Building
2270 Chino Roces Avenue Extension
Makati City 1231, Philippines

☎ (63) 2 757 1217 to 19

✉ sales-philippines@edmi-meters.com

INDIA (CHENNAI)

EDMI INDIA PVT. LTD.

(formerly Wallaby Metering Systems
Pvt Ltd.)
M-3, 9th Street
Dr. VSI Estate, Thiruvanniyur
600041 Chennai, India

☎ (91) 44 4225 1600

✉ sales-india@edmi-meters.com

CHINA (SHENZHEN)

EDMI (SHENZHEN) CO, LTD

Floor 5, Building 5
Zhong Yuntai Industrial Park
Tang Tou 1st Road, Shi Yan
Bao An, Shenzhen
GuangDong 518108, P.R. China

☎ (86) 755 2675 5788

✉ sales-chinaSZ@edmi-meters.com

CHINA (SHANGHAI)

EDMI INTERNATIONAL TRADING (SHANGHAI) CO, LTD

Room 1111, Tower A
Cao He Jing High Tech Building
900 Yishan Road
Shanghai 200233, P.R. China

☎ (86) 21 5423 4452

✉ sales-chinaSH@edmi-meters.com

JAPAN (TOKYO)

EDMI JAPAN CO, LTD

2-1-10 Higashi-Gotanda
Shinagawa-ku, Tokyo
141-0022, Japan

☎ (81) 3 3445 2033

✉ sales-japan@edmi-meters.com

VIETNAM (HO CHI MINH)

EDMI VIETNAM CO LTD

27 Dao Duy Anh Street,
Ward 9, Phu Nhuan District,
Ho Chi Minh City, Vietnam

☎ (84) 8 3842 2413

✉ sales-vietnam@edmi-meters.com

THAILAND (BANGKOK)

EDMI (THAILAND) LIMITED

61/1 Pattanakarn Road,
Soi 54 Suan Luang
Bangkok 10250, Thailand

☎ (66) 2 320 0462

✉ sales-thailand@edmi-meters.com

AUSTRALIA (BRISBANE)

EDMI PTY LTD

Level 7, 51 Alfred Street,
Fortitude Valley, Queensland
Australia 4006

☎ (61) 7 3881 6466

✉ sales-australia@edmi-meters.com

AUSTRALIA (MELBOURNE)

EDMI GAS PTY LTD

7 Fowler Road
Dandenong South, Victoria
3175, Australia

☎ (61) 3 9794 6000

✉ gassales-australia@edmi-meters.com

NEW ZEALAND (WELLINGTON)

EDMI NZ LTD

Level 1, 181 Wakefield St
Wellington 6011
New Zealand

☎ (64) 4 801 4700

✉ sales-newzealand@edmi-meters.com

UNITED KINGDOM (NEWCASTLE)

EDMI EUROPE LIMITED

The Grainger Suite
Dobson House, Regent Centre
Newcastle upon Tyne
NE3 3PF, United Kingdom

☎ (44) 191 233 6322

✉ sales-europe@edmi-meters.com

COLOMBIA (BOGOTA)

EDMI LATIN AMERICA SAS

Carrera 13 No. 96-67 Edificio
Akori Oficina 207,
Bogota, Colombia

☎ (57) 1 601 8960

✉ sales-america@edmi-meters.com

